

TO LET

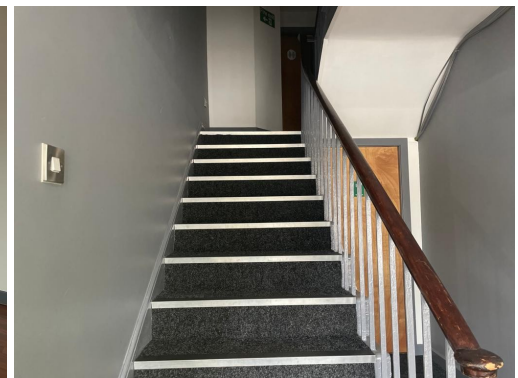


## Office Space To Rent

Price: £225.00

Huddersfield

150 Westbourne Road Marsh Huddersfield  
HD1 4LF



## DESCRIPTION

Right Choice Properties are pleased to offer this smart modern office space on the first floor above Emily's Cafe in the heart of Marsh Huddersfield. The property is located on a busy main road. Approximately 15m<sup>2</sup>; Available immediately.

Interested? Give us a call - [01484792100](tel:01484792100)